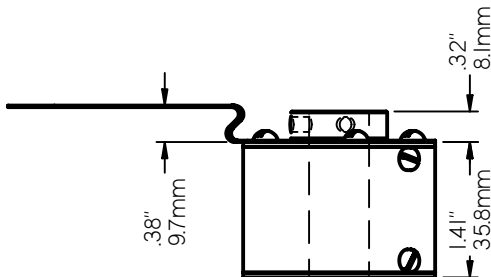
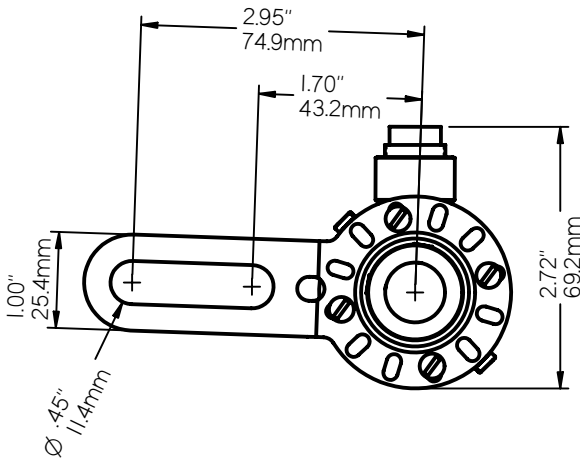
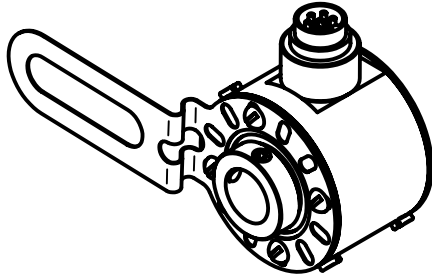


# MB-FB2

# Flexible Mounting Tether

## DIMENSIONS

Shown with HS20 hollow shaft encoder. Also fits the R20, RG and RL shaft encoders.



## DESCRIPTION

Designed to adapt the HS20 hollow shaft encoder to a C-face motor mount. It also fits the RG and RL shaft encoders, and provides a flexible tether for many diverse applications. The MB-FB2 is made of .015" (.38mm) thick stainless steel that flexes to accommodate the axial misalignment between the rigidly coupled encoder/motor shafts and the motor mount. Failure to use a flexible mounting such as this can significantly reduce the life of the encoder's bearings.

Also, see our other tethers:

- MB-FB2A - flattened version of the MB-FB2
- MB-FB2B - .125" thick rigid version of the MB-FB2

## INSTALLATION

1. Fasten the MB-FB2 tether to the face of the encoder using three or four 6-32 screws (supplied). Note: the RL uses 8-32 screws. The MB-FB2 mounting holes allow for the positioning of the tether in 30° increments.
2. Position the encoder onto the motor shaft but do not tighten any shaft set screws.
3. Securely fasten the MB-FB2 to the motor frame.
4. Tighten the shaft set screws.

## ORDERING INFORMATION

Part No.: MB-FB2  
(includes all parts shown in the parts list)

## PARTS LIST

Qty	Description	Part No.
1	MB-FB2 flexible tether	500-MSC010
4	6-32 x 3/16" RH screws	550-SCR202



602 E. North Street 630-365-7148  
Elburn, IL 60119, USA Fax: 630-365-7149  
[www.photocraftencoders.com](http://www.photocraftencoders.com)