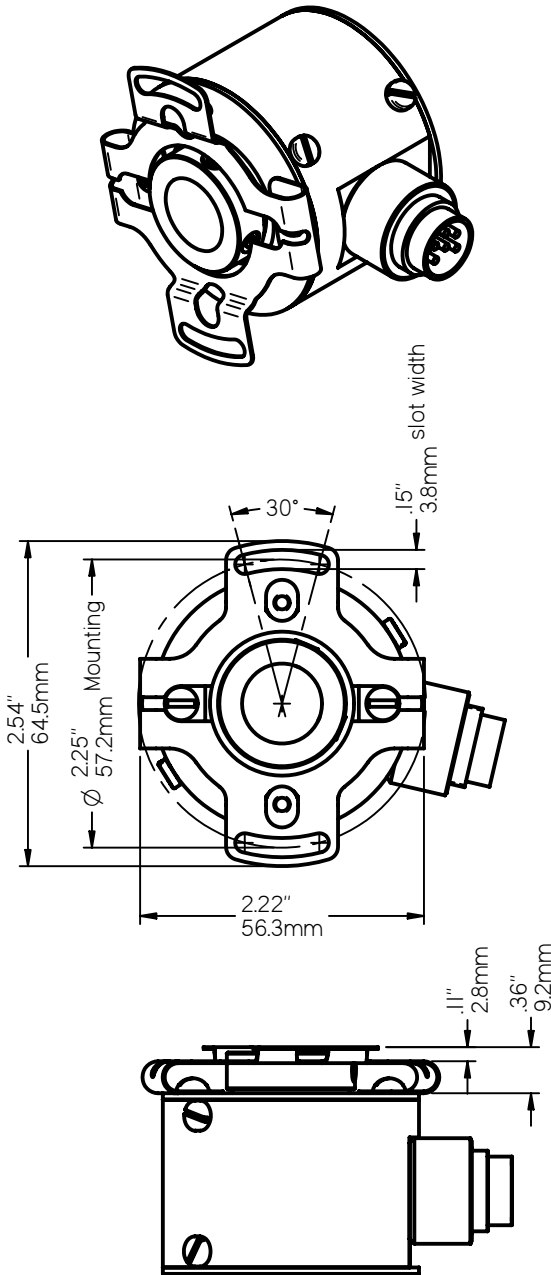


# MB-FB3

# Flexible Mounting Bracket

## DIMENSIONS

Shown with HS20 hollow shaft encoder.



## DESCRIPTION

Designed for the HS20 hollow shaft encoder, the MB-FB3 flexible mounting bracket is made of .015" (.38mm) thick stainless steel that flexes to accommodate the axial misalignment between the rigidly coupled encoder/motor shafts and the motor mount. Failure to use a flexible mounting such as this can significantly reduce the life of the encoder's bearings.

## INSTALLATION

1. Fasten the MB-FB3 bracket to the face of the encoder using two 6-32 screws (supplied) so the bracket is approximately centered on the encoder shaft.
2. Position the encoder onto the motor shaft but do not tighten any shaft set screws.
3. Securely fasten the MB-FB3 to the motor frame using two screws (screws are not provided).
4. Tighten the shaft set screws.

## ORDERING INFORMATION

Part No.: MB-FB3  
(includes all parts shown in the parts list)

## PARTS LIST

| Qty | Description             | Part No.   |
|-----|-------------------------|------------|
| 1   | MB-FB3 flexible bracket | 500-MSC011 |
| 2   | 6-32 x 3/16" RH screws  | 550-SCR202 |



602 E. North Street 630-365-7148  
Elburn, IL 60119, USA Fax: 630-365-7149  
[www.photocraftencoders.com](http://www.photocraftencoders.com)