

SPECIFICATIONS

Mechanical

Shaft: 1/4", 5/16", or 3/8" diameter, single or double ended.
(Specify when ordering)

Weight: 11 oz. (312 grams)

Shaft Loading: Radial: 25 lb. (11.3 kg.) max.
Axial: 10 lb. (4.5 kg.) max.

Bearing Life (L_{10}): 36 x 10⁶/RPM = hours

Note: to allow for axial and angular misalignment, a flexible shaft coupling is recommended.

Materials:

- Case: Aluminum, anodized
- Shaft: 303 Stainless steel
- Switch access door: Plastic

Connector: 6-pin, 97-3102A14S-6P

Mating Connector: 97-3106A14S-6S

Electrical

Supply Voltage (V_{IN}): (specify when ordering)
5 ± 5% vdc or 8-30 vdc

Supply Current: 50ma maximum (no load)

Output Current (I_O): 50ma max source/sink

Output Circuits: (specify when ordering)

- Push/Pull
- Combined sourcing/sinking output
- NPN open collector
(V_{CC} = 30 vdc maximum)

Output Waveform: 50/50 squarewave

- **Pulse On-Off Ratio:** 50% ± 10%
- **Pulse Interval Jitter:** ±10%
- **Pulse rise time:** 2 µsec (max)
- **Pulse fall time:** 5 µsec (max)
- **Voltage (high):** V_{IN} - 2.5 vdc (min)
- **Voltage (low):** 1.5 vdc (max)
(600 rpm, V_{IN} = 24vdc, 10ma < I_O < 50ma, 25°C)

Operating Temperature: 0° to 70°C

Maximum Operating Speed: 2,500 rpm
(Program dependent)

Programs

Please call for detailed information about

P64AJ - Pulse output on connector Pin D.
Switches 1-6 are used to select the pulses per revolution which could be any value from 1 through 64.

Please inquire about others.

Electrical Connections

Pin No.	Function	Wire Color
A	Common	Black
B	+vdc	Red
C	Output C or Z	Brown*
D	Output A	White
E	Output B	Green
F	—	—

* Output C/Z is green if B is not used.

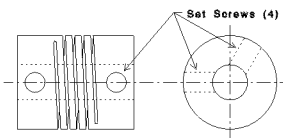
Accessories

Cable Assembly (C6-x-10): 10 ft. (3m), shielded cable with 97-3106A14S-6S connector (x is number of conductors)
Other lengths are available.

CE mark requires Photocraft cable, and surge protection if cable exceeds 100' (30m) or leaves the building.

Flexible Coupling: aluminum helical coil style coupling for shaft to shaft connections.

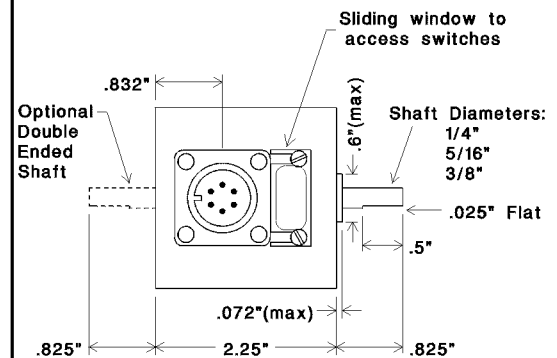
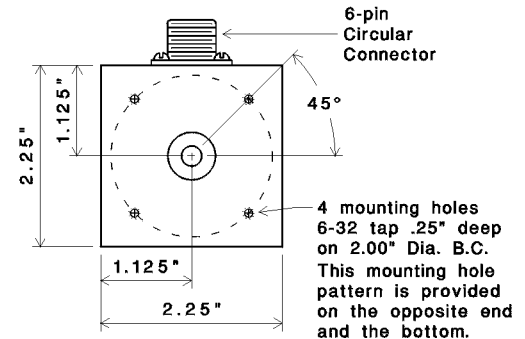
- AE087-10-10: 5/16" shaft size .875" diameter X 1" length
- AE100-12-12: 3/8" shaft size 1" diameter X 1.25" length



Installation Instructions

1. Mechanically mount the encoder.
Use a flexible shaft coupling to compensate for axial and angular misalignment.
2. Attach the cable leads to the control device (e.g. PLC) ensuring that the power supply meets specifications.
3. Set the configuration switches.
Switches can be changed at any time.
4. Attach the cable to the encoder.

DIMENSIONS



ORDERING INFORMATION

RS	-	P	/	
Model		Program Name		
Shaft Diameter: A=5/16" B=3/8" C=1/4"		Supply voltage: 5 or 8-30		
Leave blank for Single ended shaft D=Double ended shaft		Output circuit: Leave blank for Push/Pull C = NPN open collector		

Short lead time options are underlined.

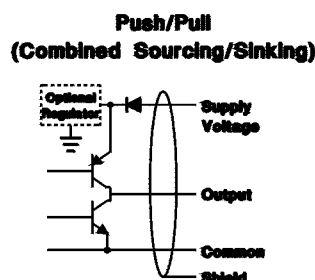
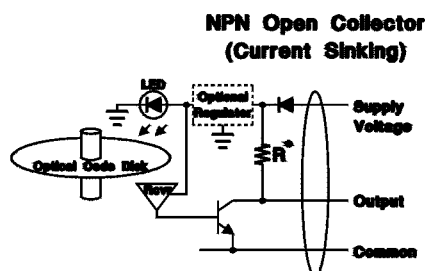


Figure 1 - Output Circuits