

Figure 1: Y-2a Assembly (shown with PPI)

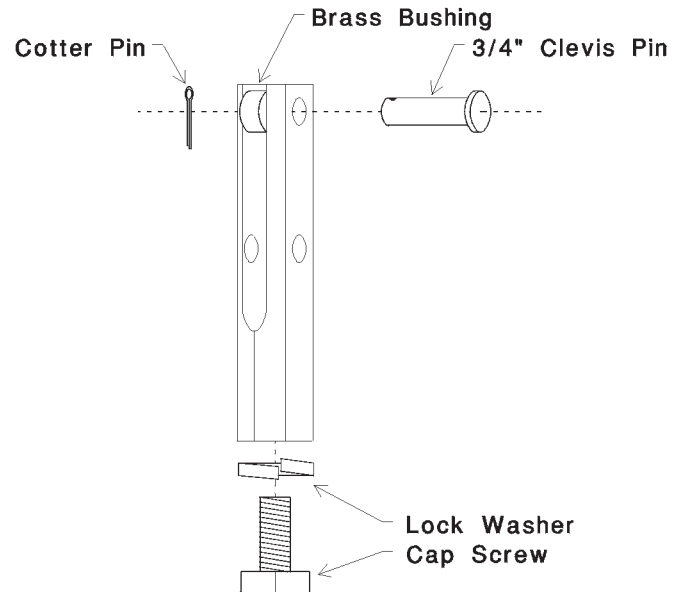


Figure 2: Y-2a Component Detail

## DESCRIPTION

The Y-2a provides a single point of attachment that allows the model RH pulse position indicator (PPI) to maintain alignment with the conveyor belt or rollers, and therefore minimize wheel wear. With its double wheel construction, the PPI is self-aligning when allowed to pivot freely from the Y-2a.

The Y-2a is intended to be used with a customer supplied counter-weight or other mechanism to keep the PPI wheels firmly against the conveyor belt when mounted under the conveyor.

## INSTALLATION

1. Assemble Y-2a components onto the PPI as shown in the figure.
2. Bolt Y-2a yoke to a mounting beam (not supplied) using the 3/8-16 Hex Cap Screw and lock washer supplied.
3. Assemble the customer supplied counter-weight onto the PPI.
4. Attach the PPI cable so the cable is clear of the pivot point, and with sufficient slack to allow for expected up/down and sideways PPI movement.

## ORDER INFORMATION

Part No.: Y-2a

(Includes all parts shown in the spare parts list)

## SPARE PARTS LIST

Qty	Description	Part #
1	Y-2 Yoke	500-MCH075
1	Clevis Pin	550-MS004
1	Brass Bushing	500-MCH041
1	Cotter Pin	550-MS005
1	3/8-16 x 3/4" Cap Screw	550-SCR303
1	3/8" Lock Washer	550-WSH005



602 E. North Street  
Elburn, IL 60119, USA  
[www.photocraftencoders.com](http://www.photocraftencoders.com)

630-365-7148  
Fax: 630-365-7149